

GLADSTONE GALLERY

Farmer, John, "Interview Locations/Family Photographs," *Art Journal*, Spring 2000

Interview Location
Survey of the Aripuanã River Region
São Miguel Community, Boca do Juma River, Brazil
Interview Subject: Francisco Colares
Anthropologist: Ligia Simonian,
1999
Framed silver gelatin print, ed. 6.
32 x 28 (81.5 x 68).

In 1999, Sharon Lockhart traveled to the Amazon region of Brazil, where she shot a new 35mm film, entitled *Teatro Amazonas*. As Lockhart developed her concept for the film, she began to think about making a series of photographs in Brazil. She made the acquaintance of two Brazilian anthropologists and arranged to accompany them on two respective research trips, during which they would study segments of the Amazon region's population. One anthropologist, Ligia Simonian, intended to research the role of women in the rubber tapping industry in villages of the Rio Aripuanã region. The other, Isabel Soares de Souza, planned to study the bartering economy of the people of Apeú-Salvador, an island near the mouth of the Amazon in the state of Pará.

Sharon Lockhart

Interview Locations/Family Photographs

Lockhart shot the series *Interview Locations/Family Photographs* during the expedition that Simonian organized; six works from this series, each comprised of from one to six framed photographs, are reproduced in this portfolio. For seventeen days, the group traveled up and down the Rio Aripuanã by boat, stopping at communities along the way, where Simonian would interview families in their homes. During the course of her research, she realized that women had a much less important role in the rubber tapping industry than she had hypothesized and that price deregulation had virtually destroyed the industry. So she decided instead to survey the region's population, in decline as more and more residents were leaving to escape its broken economy.

Lockhart and her cameraman sat in on these interviews. After each interview was concluded, they would take a black-and-white photograph of the vacated interview location. She would also rephotograph any family photographs belonging to the interview subjects (some of the subjects did not have family photographs). Shot in the context of an anthropological expedition, the ensembles of interview locations and family photographs would seem to invoke the aesthetic of ethnographic photography and its drive to look closely at its human subject, as it is surveyed, documented, and classified. Their titles, in the form of a matter-of-fact lists of information about the subject represented, echo this drive. We could almost imagine seeing these images in an ethnographic archive in a natural history museum.

However, the people who are the ostensible subjects of these photographs are hauntingly absent. The interview locations are shots of empty rooms, and the family photographs are not photographs of people, but photographs of photographs. It is as if the human subject has vanished, withheld from the camera's gaze, unsettling the viewer, for it is a disappearance that almost seems to suggest death. Indeed, the raking sunlight in some of the photographs, the clocks in others, and the worn quality of the family photographs all seem to evoke the inexorability of the passage of time. What Ivone Margulies has written about the film is true also for these photographs: it is in the rift between the onlooker and the object of the look that Lockhart's revised ethnography emerges to vision.

Sharon Lockhart is an artist working in photography and film in Los Angeles. The Museum Boijmans Van Beuningen in Rotterdam, the Kunstmuseum Wolfsburg, and the Kunsthalle Zrich co-organized a one-person exhibition of her work last year. The catalogue, *Sharon Lockhart: Teatro Amazonas*, with essays by Timothy Martin and Ivone Margulies, is available from NAI Publishers, Rotterdam, and Distributed Art Publishers, New York.

GLADSTONE GALLERY

Farmer, John, "Interview Locations/Family Photographs," *Art Journal*, Spring 2000

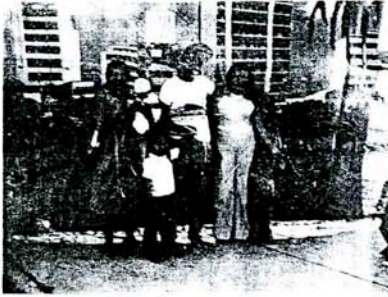


Photo from the Collection of Maria Helena de Oliveira

Interview Location

Survey of the Aripuanã River Region

Santa Luzia Community, Boca do Juma River, Brazil

Interview Subject: Maria Helena de Oliveira

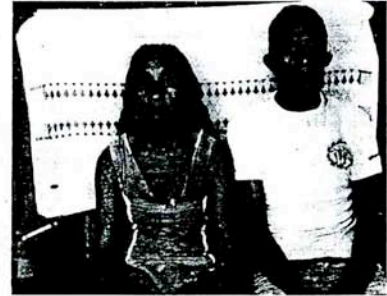
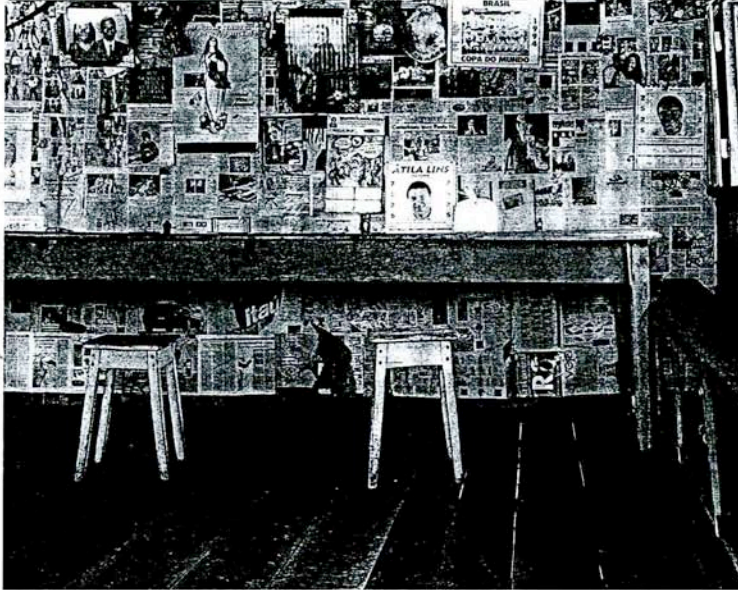
Anthropologist: Liza Simonian, 1999

Framed chromogenic and silver gelatin prints, ed. 6,
27 x 52 (69 x 131.5)

66 INTERVIEW PHOTO

GLADSTONE GALLERY

Farmer, John, "Interview Locations/Family Photographs," *Art Journal*, Spring 2000



Interview Location
Survey of the Aripuanã River Region
Tucunaré Community, Paraña do Capimtuba River, Brazil
Interview Subjects: Raimunda Ferreira, Manoel Batista Vieira
Anthropologist: Ligia Simonian

Photo from the Collection of Raimunda Ferreira and
Manoel Batista Vieira, 1999
Framed silver gelatin prints, ed. 6.
27 x 52 (69 x 131.5)

67 art journal

GLADSTONE GALLERY

Farmer, John, "Interview Locations/Family Photographs," *Art Journal*, Spring 2000



Photo from the Collection of João Damasceno

Interview Location

Survey of the Aripuanã River Region

Natal Community, Aripuanã River

Interview Subject: João Damasceno

Interview Subjects: Alexandre de Oliveira Bento,

José Luiz Cardoso, Maria de Jesus Araújo Ferreira

Anthropologist: Ligia Simonian

Photos from the Collection of Alexandre de Oliveira Bento, 1999

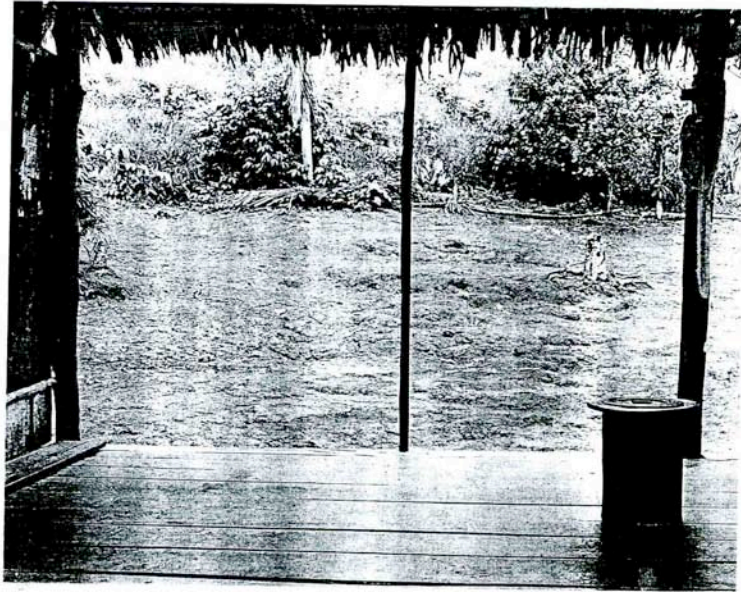
Framed chromogenic and silver gelatin prints, ed. 6.

27 x 141 (69 x 358).

69 art journal

GLADSTONE GALLERY

Farmer, John, "Interview Locations/Family Photographs," *Art Journal*, Spring 2000



Photos from the Collection of Onória Reis

Interview Location

Survey of the Aripuanã River Region

Miramar Community, Boca do Juma River, Brazil

Interview Subjects: Onória Reis, Manoel Ademar Almeida Goes

Anthropologist: Lúcia Simonian, 1999

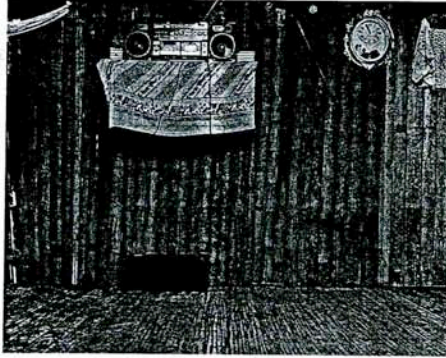
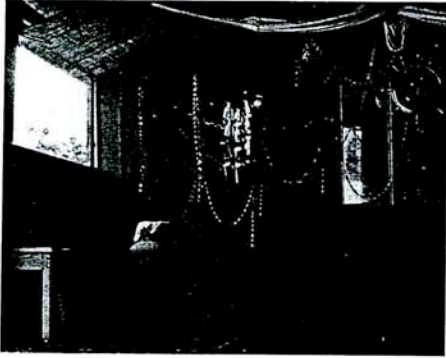
Framed silver gelatin prints, ed. 6

27 x 66 (69 x 166.5)

71 art journal

GLADSTONE GALLERY

Farmer, John, "Interview Locations/Family Photographs," *Art Journal*, Spring 2000



GLADSTONE GALLERY

Farmer, John, "Interview Locations/Family Photographs," *Art Journal*, Spring 2000



Interview Location
Survey of the Aripuanã River Region
Furo Grande Community, Aripuanã River
Interview Subjects: Josefa Miranda Alves,
Isaques Pereira de Souza
Interview Subjects: Clorisvaldo Pereira Miranda,
Joana D'arc Dias dos Santos
Interview Subject: Maria Lúcia Pereira Miranda
Anthropologist: Ligia Simonian

Photos from the Collection of Maria Lúcia Pereira Miranda, 1999
Framed chromogenic and silver gelatin prints, ed. 6.
27 x 157 (69 x 398).