



PLAYS
at THE
GARRICK

The Entertainer

by JOHN OSBORNE Directed by ROB ASHFORD



Cast includes
**KENNETH
BRANAGH**

Limited offer
£15
TICKETS



Philippe Parreno: Anywhen at Turbine Hall, Tate Modern

CULTURE | ART



14TH OCTOBER 2016



ANNA SOUTER



The grandly industrial

Philippe Parreno: Anywhen at Turbine Hall



Dates

4th October 2016 - 2nd April 2017

Entry

Free

Links & directions



POPULAR | LATEST | TOP PICKS

space of the Tate Modern's Turbine Hall is one of the biggest installation art sites in the world. Filling the cavernous space is a daunting task, especially after the museum's much-discussed £260 million overhaul and extension. French artist Philippe Parreno rises to the challenge, albeit perhaps not as spectacularly as some of his predecessors.

This year's Hyundai Commission utilises video, sound, light and, unusually, helium-filled fish balloons to create an immersive experience. The installation changes constantly, reacting to the time of day and developing over the six months that it will be in place. The result is that no two visits will be the same. These changes are partly controlled by data collected from a colony of living yeast being nurtured in the corner of the hall, providing a strange synthesis between the electronic



Eshtebak (The Clash)



FILM FESTIVALS



Snowden



FILM FESTIVALS



How to create the perfect winter beauty and skincare routine

FASHION & LIFESTYLE



Trident Moon at the Finborough Theatre

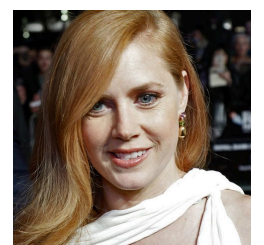
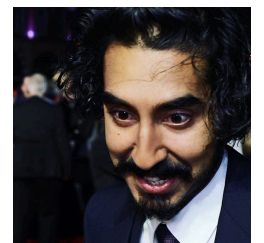
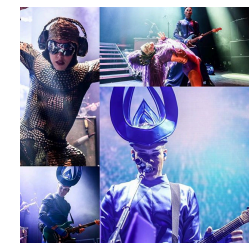
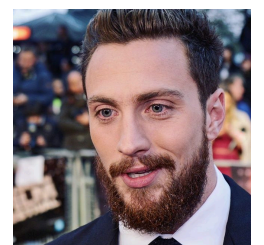
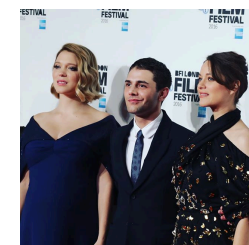


THEATRE



The Clove Club to open Italian sister restaurant Luca in November

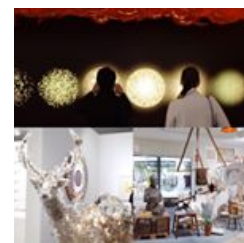
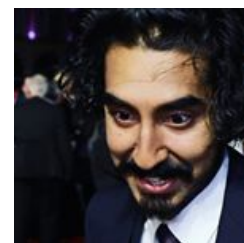
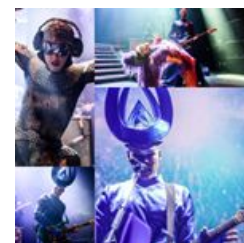
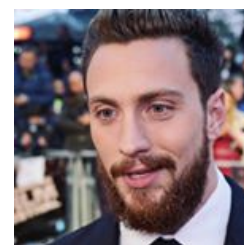
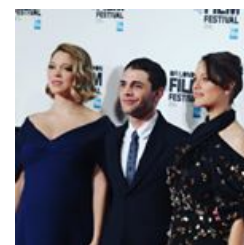
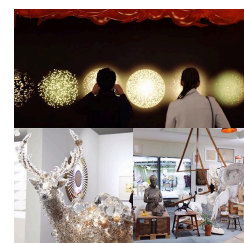
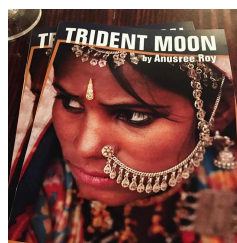
FOOD & DRINKS



and the organic.

In *Anywhen*, Parreno wants to encourage viewers to experience the piece in their own way and on their own terms. There's a carpet on the floor, so that visitors can linger and even lie down if they want to. The mood in the room shifts easily from contemplative (listening to extracts of classical music) to fun (playing with the helium fish), and back again. Parreno's message is that there's no right way to experience his work.

Since the addition of the Tate Modern's giant Switch House extension, the Turbine Hall has become a hub for the museum, providing an impressive entrance at ground level and two crossing points several stories up. Parreno's installation turns it into the beating heart of the whole institution, using modern technology to draw in visitors and circulate them around the



building.

The visual and audio complexity of *Anywhen* perhaps make it less initially striking than previous stunningly simple installations by artists such as Ai WeiWei and Olafur Eliasson. However, if visitors take a moment to linger, they will soon find themselves entranced by Parreno's ever-shifting environment.

Verdict: ★★★★★

Anna Souter

Philippe Parreno: Anywhen is at Turbine Hall, Tate Modern from 4th October 2016 until 2nd April 2017, for further information visit [here](#).

0 Comments

Sort by **Oldest** ▼

Add a comment...

MORE IN ART

2016: A

Beyond Caravaggio at the National Gallery
 ★★★
 ★★
 Anna Souter

complete guide to London's biggest art event
 Anna Souter

Frieze Masters 2016: A complete guide
 Anna Souter

Picasso Portraits at the National Portrait Gallery
 ★★★
 ★★
 Anna Souter


Henri Barande at Saatchi Gallery
 Anna Souter

Marten: Drunk Brown House at Serpentine Sackler
 ★★★
 ★★
 Anna Souter

Adoration: Heaven on Earth at the National Gallery
 ★★★
 ★★
 Catherine Sedgwick

World Through Empty Stares at the Menier Gallery
 ★★★
 ★★
 Mark Sempill

Turner Prize 2016 at Tate Britain
 ★★★
 ★★
 Anna Souter

[THE UPCOMING](#)

- Contact us
- Contributors list
- Film Festival post creator
- Fund us
- Join

mailing
list
Join us
Our
London
food
map
Subscribe
What,
when,
why

Copyright © 2016 FL
Media Ltd

